

# **SMART Campus: Where Technology Meets Excellence**

**(A Sophisticated, Multifaceted, Advanced, Research-based  
and Technology enabled Ecosystem for Empowering Students  
as 21<sup>st</sup> Century Learners)**

# OBJECTIVES

KAHM Unity Women's College embraces a SMART campus approach. It integrates modern technology into education, creating an engaging learning environment. The ICT infrastructure supports dynamic educational frameworks.

- To provide seamless digital resources and connectivity across the campus.
- To support interactive and innovative teaching methods through modern hardware systems.
- To offer digital tools and platforms for both students and faculty to optimize the learning and administrative processes.
- To enable access to virtual labs and e-learning resources for different departments.

# ICT Infrastructure Overview

## 1 Digital Resources

Seamless connectivity across campus supports innovative teaching methods.

## 2 Modern Hardware

State-of-the-art technology facilitates academic and administrative activities.

## 3 Digital Tools

Platforms optimize learning and administrative processes for students and faculty.



# Android TVs in Classrooms



## 46 TVs Installed

Android TVs in classrooms, labs, and common areas for digital displays and screening.



## Lecture Support

Facilitates presentations and lectures with modern visual aids.



## Campus Announcements

Enables efficient communication of campus-wide information.







# Computer Resources

## 161 Computers

Available in various labs and resource centres across the campus.

## Research Support

Computers facilitate academic research and administrative work.

## Student Access

Provides ample resources for student use and learning.



# Projectors and Smart Boards

## Projectors

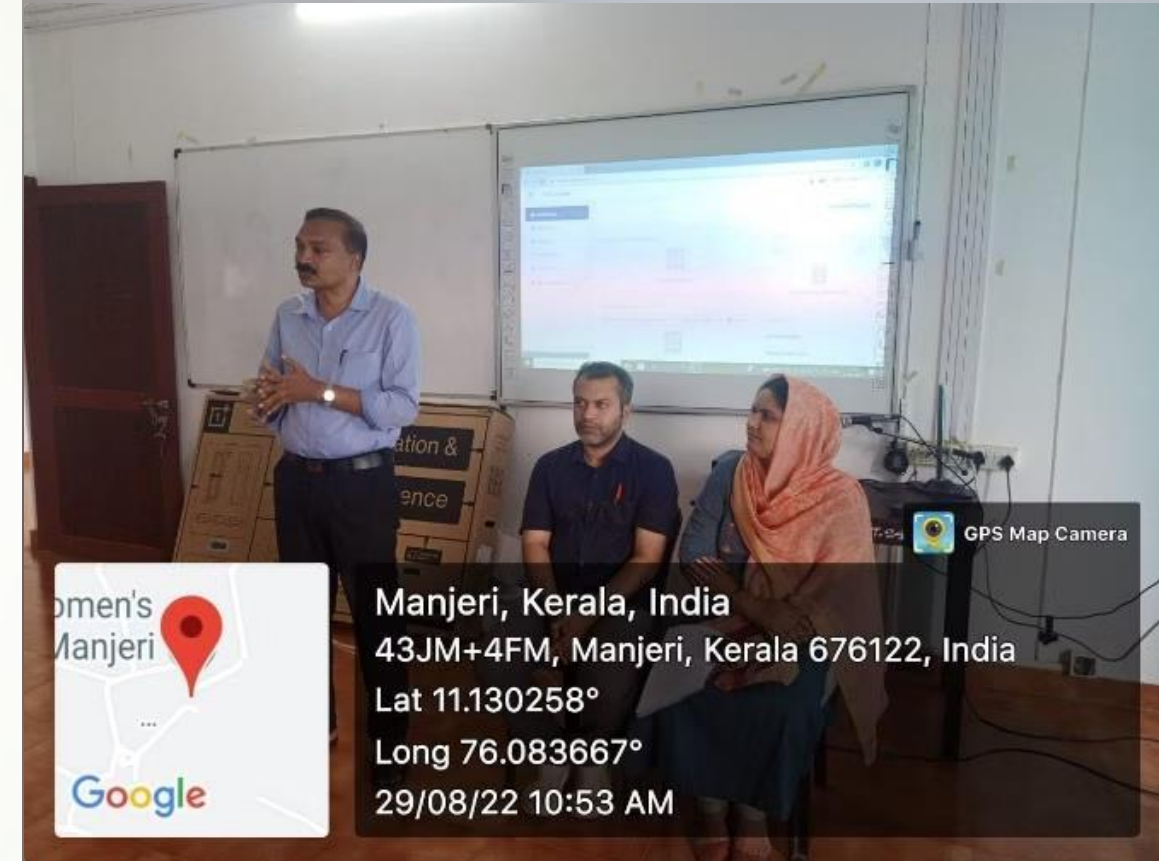
2 halls/classrooms equipped with projectors for multimedia teaching.

## Smart Boards

3 Smart panels installed in seminar halls and studio.

## Android TVs

42 Smart TVs installed in classrooms







## MINI CONFERENCE ROOMS

SL.NO	ROOM NO	NAME OF THE HALL	DEPARTMENT
1	B208	Mary Whiton Hall	Psychology
2	F101	Maryam Mirzakhani Hall	Mathematics
3	C303	Captain Lakshmi Hall	History
4	B105	Ellen Hall	Home Science
5	B306	Asima Chatterjee Hall	Chemistry
6	G402	Agnes Arber Hall	Botany
7	A305	Henri Fayol Hall	Commerce
8	F201	Vaikom Muhammed Basheer Hall	English
9	B202	Kaizen Hall	Commerce CA
10	F105	Charles Babbage Hall	Computer Science

# Departmental Tech Resources



**1**

## Desktop Computer

Each department equipped with a desktop for administrative tasks.

**2**

## Printer

Printing facilities available in every department.

**3**

## Laptop

Portable computing resources for faculty use.

**4**

## Portable Projector

Enables flexible presentation setups across campus.





# Cooperative Store Tech Facilities



## Internet-Connected Computer

Provides online access for student needs.



## Photocopy Printers

Two printers available for document reproduction.



## Color Printer

Supports high-quality color printing for academic materials.

# Digital Resource Centres

## High-Speed Wi-Fi

Campus-wide Wi-Fi access for seamless internet connectivity.

## LAN Access

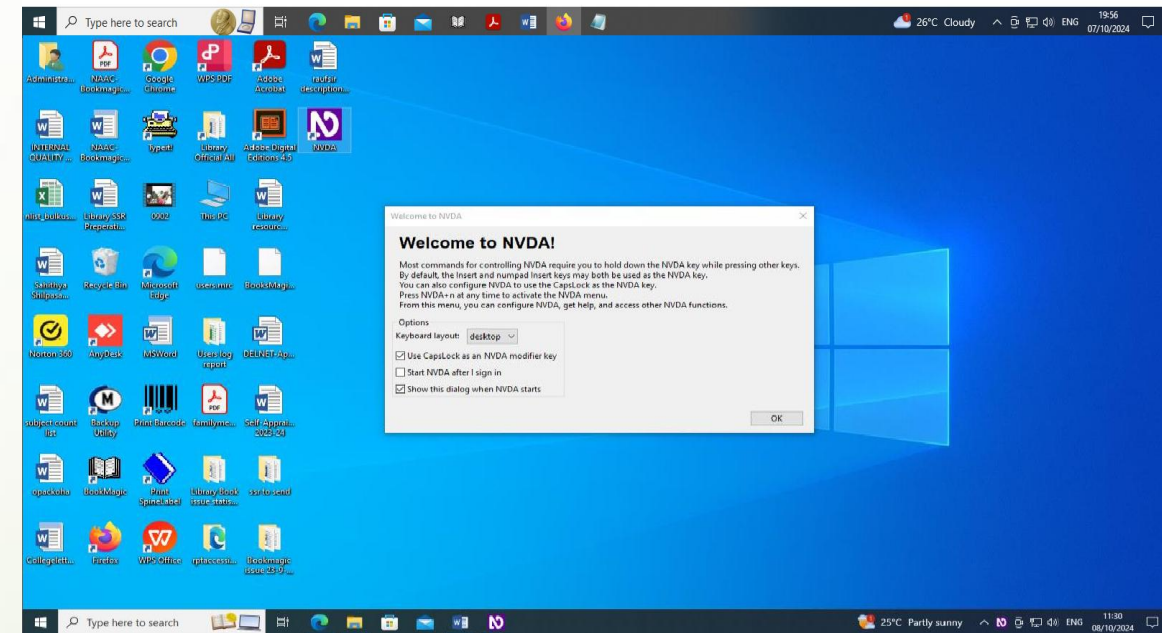
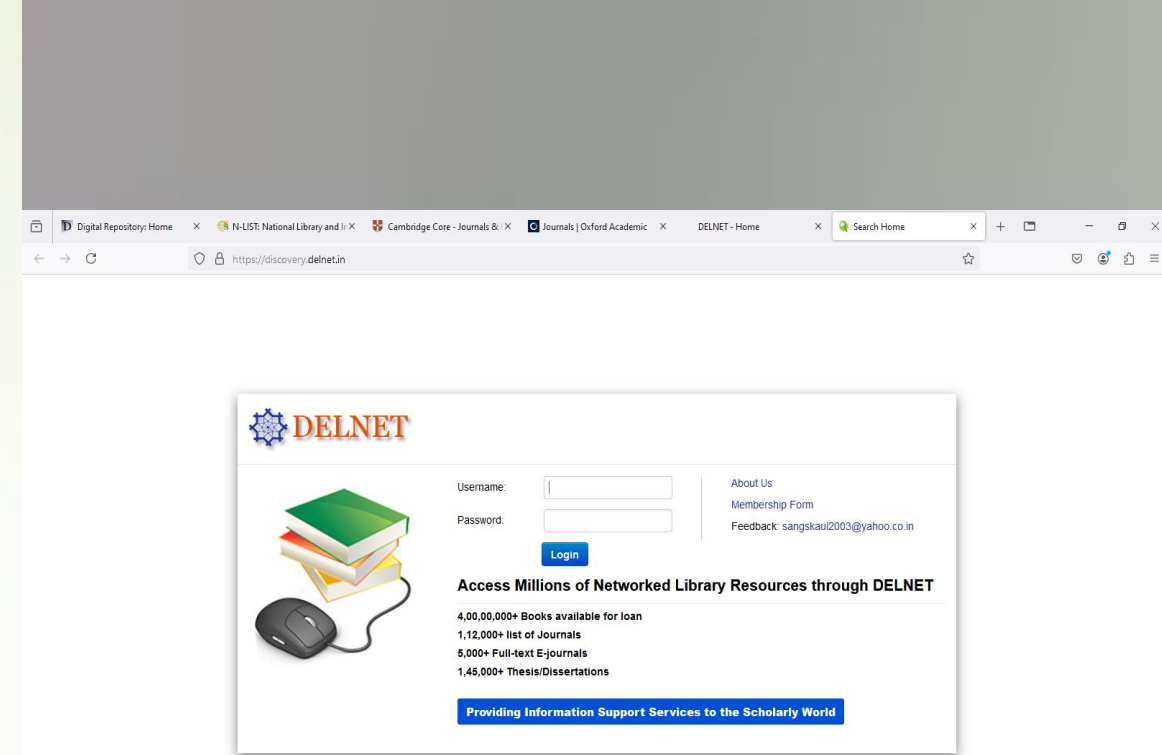
Wired network connections available in resource centres.

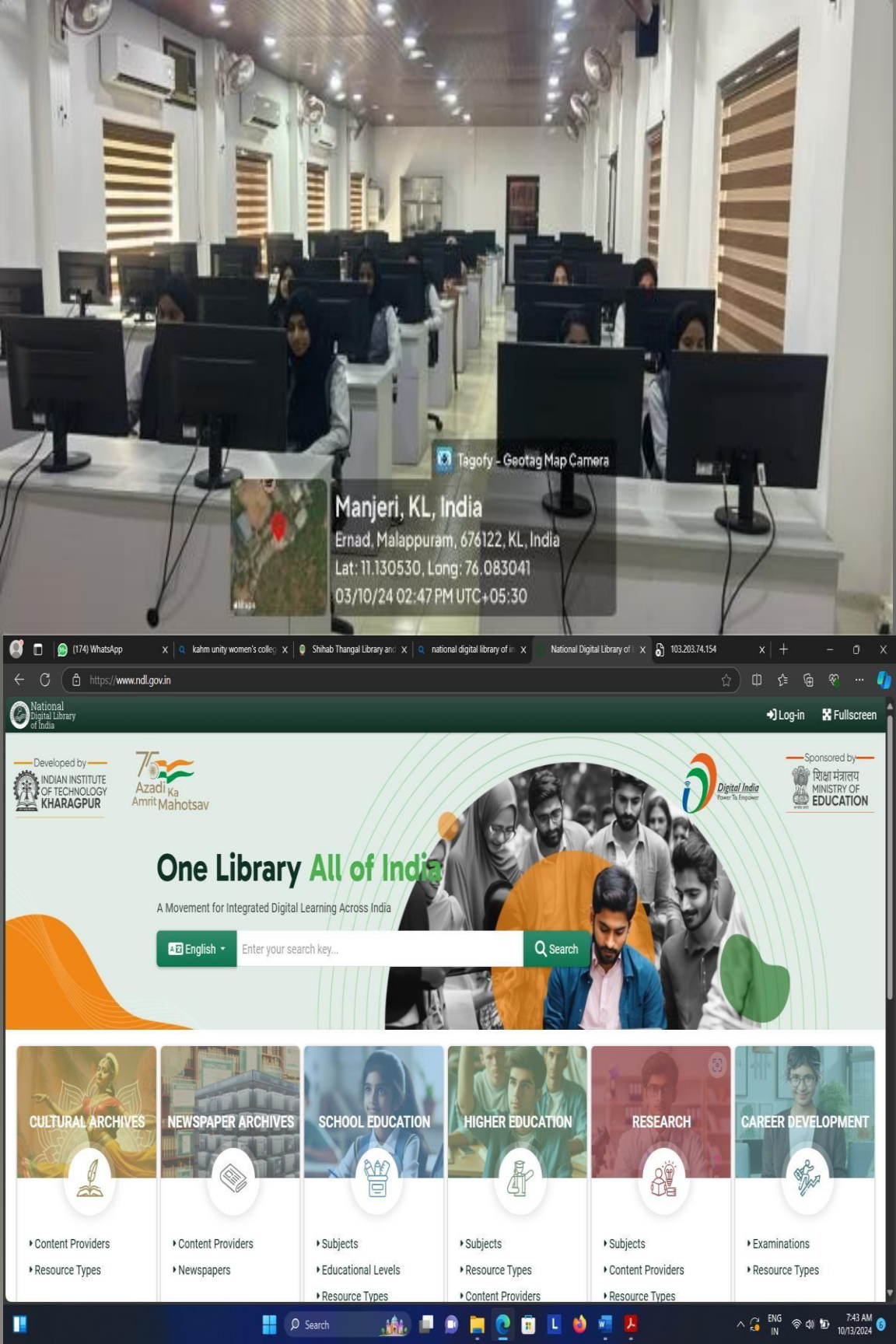
## Research Support

Facilitates academic research and online classes.

## Administrative Functions

Supports efficient management of college operations.





# Virtual Labs

## Digital Training

Students get hands-on experience with various digital technologies.

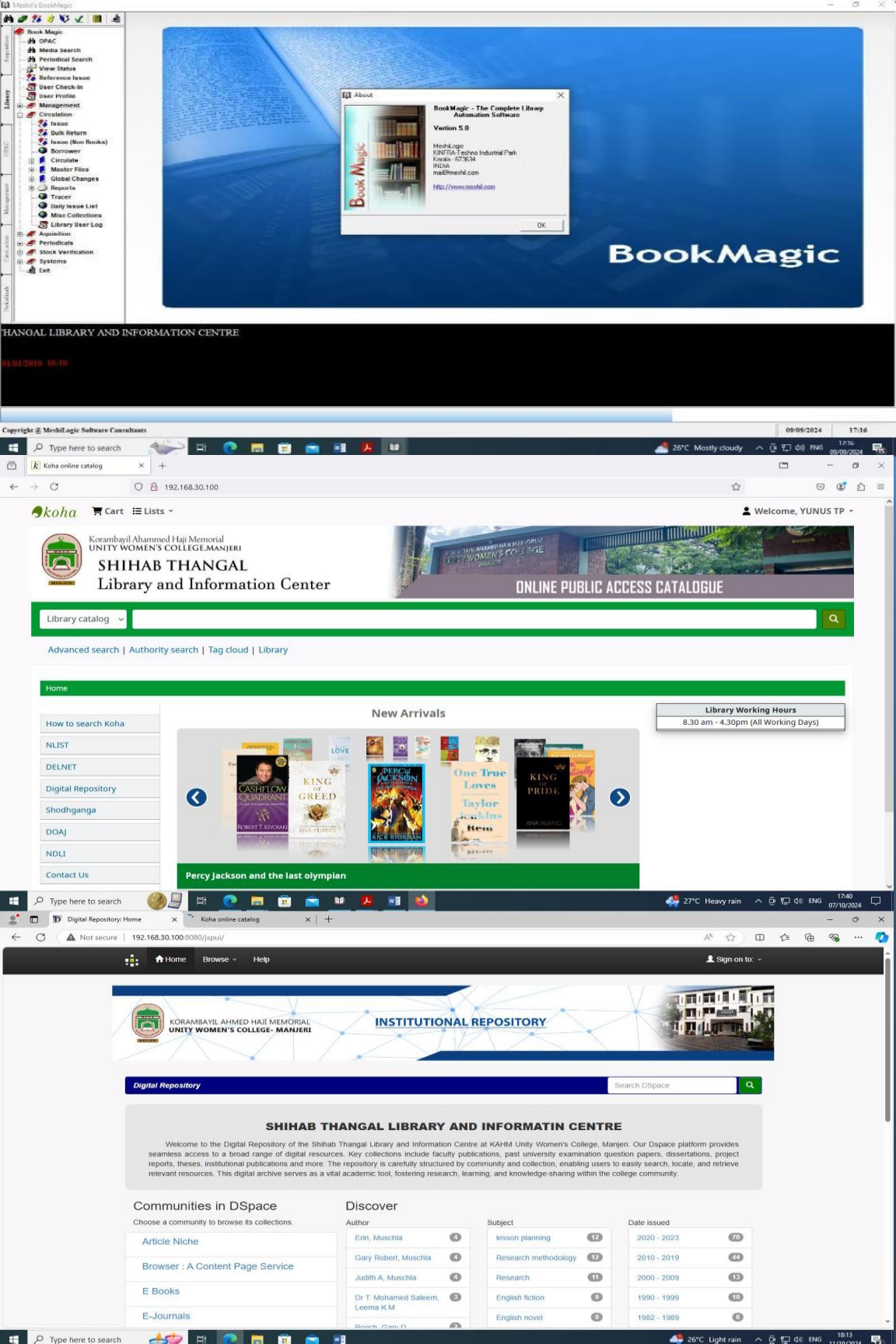
## Online Resources

Access to field-specific digital resources and simulations.

## Practical Experience

Network-based learning tools enhance students' practical skills.





# Digitally Powered Library

1

## Digital Resource Centre

24 computers available for student use in the library.

2

## ILMS Software

3 computers with Integrated Library Management System for catalogue access.

3

## Account Management

Students can manage library accounts digitally.

**MULTIMEDIA DIGITAL STUDIO**  
**SPONSORED BY MIELES PROJECT**  
**FUNDED BY EUROPEAN UNION**  
**COORDINATED BY UNIVERSITY OF**

# Digital Studio



## Content Creation PCs

Two desktops with digital content creation software.



## Recording Equipment

DSLR, video conferencing, and recording cameras available.



## Presentation Tools

Projector and interactive panel for content display.





# Google Workspace Integration

## Google Meet

Facilitates online meetings and classes.

## Google Classroom

Supports virtual learning environments.

## Google Drive

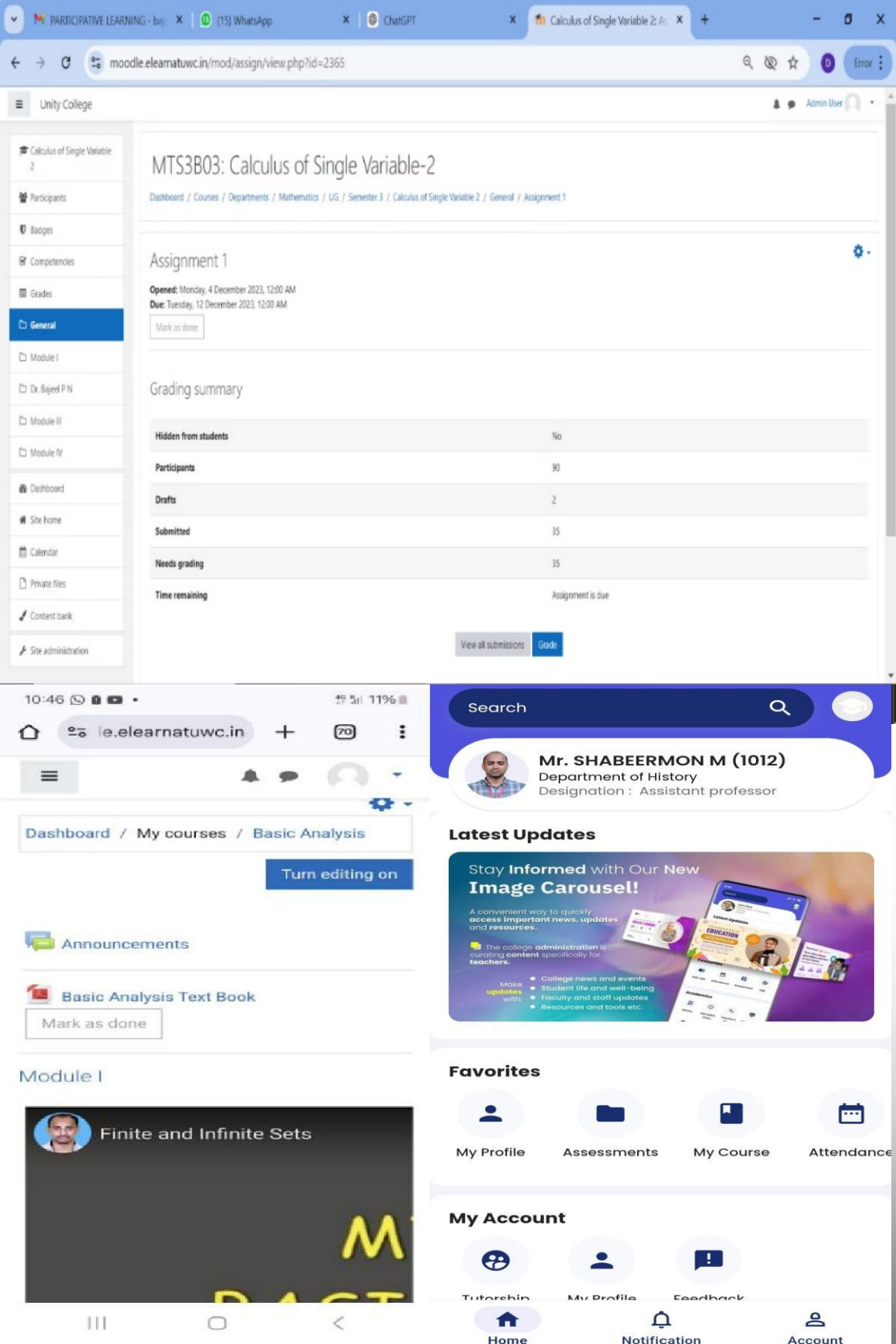
Enables easy file sharing and collaboration.

## Seamless Communication

Enhances interaction among students, faculty, and staff.







# Learning Management and Administration Software

## LMS Software

Facilitates online learning and course management.

## EMBASE ERP System

Supports internal assessments and administrative processes.

## Streamlined Operations

Enhances efficiency in academic and administrative tasks.

# Campus-Wide Wi-Fi Network

## 1 High-Speed Internet

500 Mbps connection from BSNL and Railwire.

## 2 Optical Fiber Network

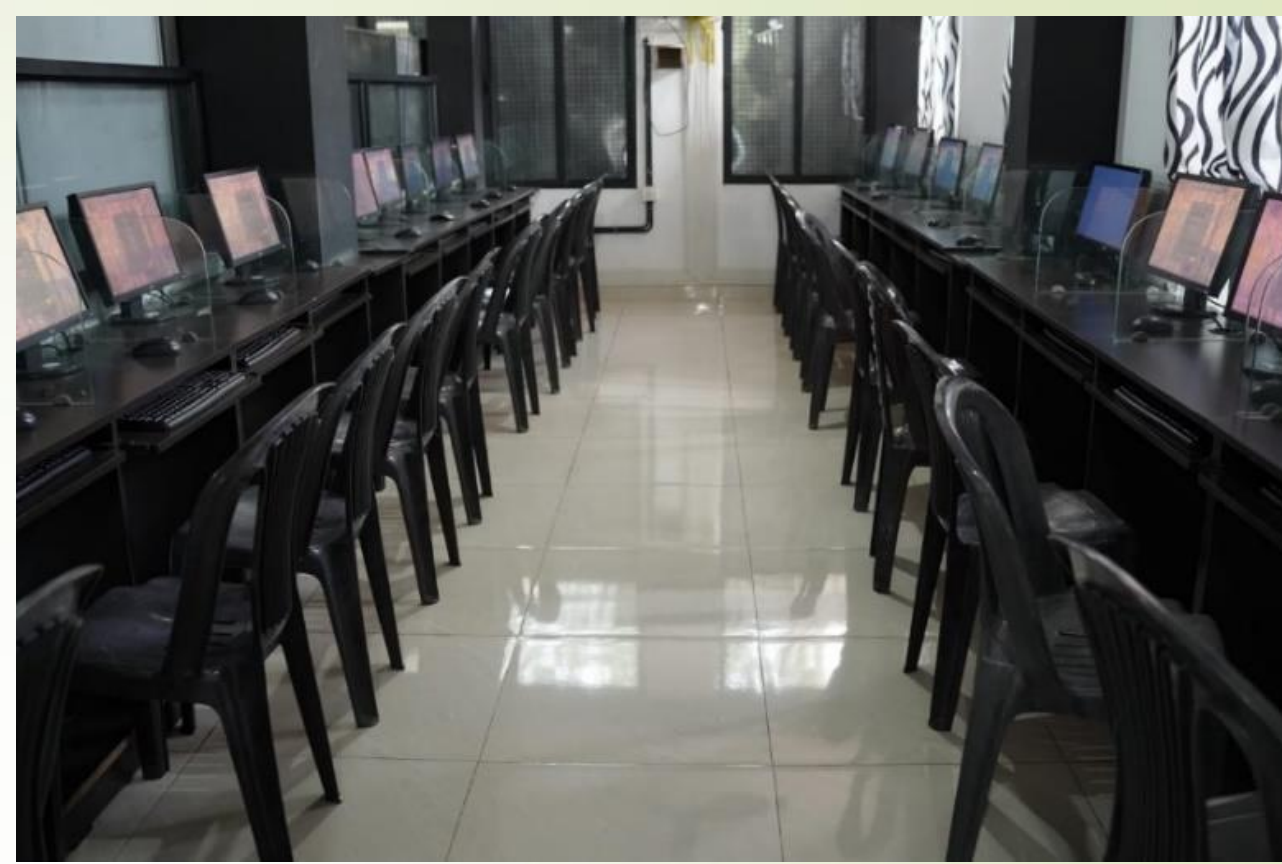
Buildings connected through OFC for efficient communication.

## 3 Secure Access

Separate login credentials for students and faculty.

## 4 Robust Infrastructure

17 switches, 27 routers, and 2 servers ensure proper networking.



<b>BEST PRACTICE: II</b>
<b>SMART CAMPUS: Where Technology Meets Excellence</b>
<b>(A Sophisticated, Multifaceted, Advanced, Research based and Technology enabled Ecosystem for Empowering Students as 21<sup>st</sup> Century Learners)</b>

KAHM Unity Women’s College, Manjeri, has embraced the concept of a SMART campus, which stands for Sophisticated, Multifaceted, Advanced, Research-based, and Technology-enabled higher education institution for ICT enabled teaching learning evaluation and research. This approach reflects the institution’s commitment to integrating modern technology into every facet of educational delivery, ensuring a rich and engaging learning environment for students and faculty alike. The ICT infrastructure at Unity Women’s College is designed to support a dynamic educational framework. This infrastructure includes well equipped hardware systems and a robust network resource centre that facilitates both Wi-Fi and LAN connectivity. The college provides essential software tools, including a Learning Management System (LMS) for course management-teaching, learning and evaluation, various departmental applications tailored to specific academic needs, and virtual labs that enhance practical learning experiences. Google Workspace is also employed extensively to promote collaboration and productivity among students and faculty. It enhances communication at the college by providing tools such as Google Docs, Sheets, and Meet for real-time document sharing and video conferencing. This integrated platform facilitates seamless group projects, remote learning, and efficient administrative processes, fostering a more dynamic and interactive educational environment. Additionally, Embase ERP significantly enhances the efficiency of administrative processes by automating tasks such as enrolment, attendance tracking, and grading, thereby reducing manual paperwork and streamlining communication between faculty and administration. This system enables staff to access vital information quickly, facilitating better decision-making and resource allocation. Meanwhile, G Suite bolsters collaboration and communication by providing an array of tools, including Google Docs for document editing, Google



Sheets for data analysis, and Google Meet for virtual meetings, which collectively promote teamwork and enhance the overall educational experience.

The college's ICT-enabled labs are integral to its educational offerings. The Internet of Things (IoT) lab provides students with hands-on experience in emerging technologies, while the sophisticated computing lab is equipped with advanced computing resources for intensive research and learning. The language lab fosters linguistic skills through interactive tools, and the soft computing lab focuses on computational intelligence and its applications. The digital resource centres, specifically for English and Commerce, offer access to a wealth of digital materials, promoting independent learning and research.

In classrooms, KAHM Unity Women's College boasts a significant investment in ICT facilities. A comprehensive list of computers, Smart TVs, and projectors is available, facilitating a technologically rich learning experience. Smart TVs and projectors enhance lesson delivery, allowing educators to incorporate multimedia resources seamlessly. The availability of computers ensures that students have access to necessary software and online resources during class.

The Unity EDC (E-Content Development Centre) is a vital component of the college's commitment to innovative teaching. This centre is dedicated to creating high-quality digital content that enhances the learning experience. It allows faculty to develop engaging e-resources that can be accessed remotely, catering to diverse learning styles and needs.

The ICT-enabled learning ecosystem of the college further supports teaching and learning processes. Teachers actively utilize a variety of ICT tools, including Google Classroom, Zoom Meet, and Google Meet, to facilitate instruction and collaboration. Evaluation tools are also integrated into this ecosystem, allowing for efficient assessment of student performance and learning outcomes. Faculty members at the college are equipped with various ICT tools and platforms for teaching, learning, and evaluation. These tools enhance the educational experience, making it more interactive and accessible. The integration of technology in the classroom not only aids in lesson delivery but also promotes student engagement and participation.

To support the effective use of these technologies, the Internal Quality Assurance Cell organizes faculty workshops focused on ICT-enabled teaching and learning processes. Training sessions conducted by the Kerala State Higher Education Council provide faculty with the necessary skills to leverage ICT effectively in their teaching methodologies. These workshops emphasize the importance of continuous professional development, ensuring that educators remain adept at utilizing emerging technologies in their instruction.

Video conferencing capabilities are an essential feature of the SMART campus. The use of platforms like Zoom and Google Meet facilitates remote learning and collaboration, allowing students and faculty to engage with one another regardless of location. This flexibility is particularly important in today's educational landscape, where distance learning has become increasingly prevalent. The ability to conduct virtual classes and meetings enhances communication and interaction, fostering a connected educational community.

In summary, Unity Women's College's SMART campus exemplifies the integration of advanced technology in education. With its sophisticated ICT infrastructure, dedicated labs, and comprehensive ICT-enabled learning ecosystem, the college provides a rich educational experience that prepares students for the challenges of the modern world. The continuous professional development of faculty and the emphasis on collaborative learning further enhance the institution's commitment to excellence. As technology continues to evolve, KAHM Unity Women's College remains dedicated to leveraging these advancements to create an enriching and engaging learning environment for all its stakeholders.



  
PRINCIPAL  
Korambayil Ahamed Haji  
Memorial Unity Women's  
College, Manjeri